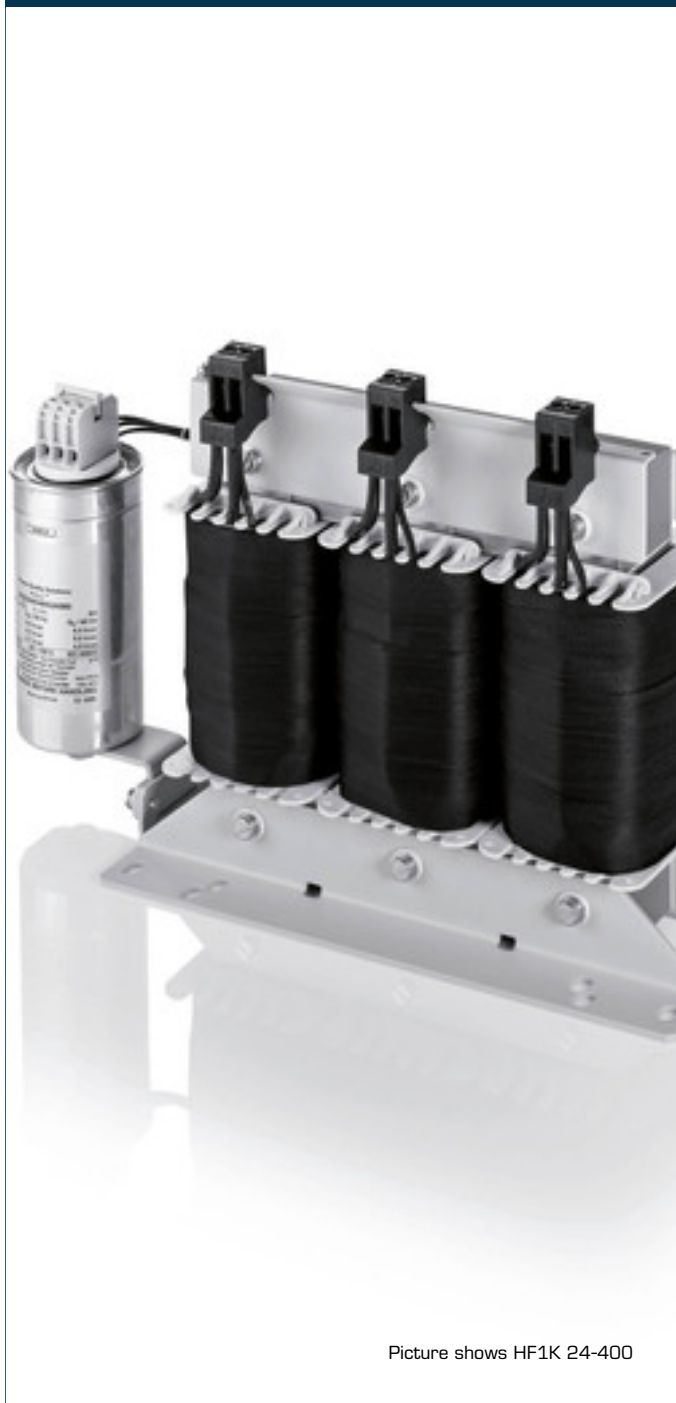


Harmonic filter **HF1K 18-400**



Picture shows HF1K 24-400

Advantages

Sinusoidal current consumption from the main in devices with uncontrolled B6U diode rectifiers
Compliance with EN 61000-3-2, EN 61000-3-12
Support in the compliance with IEEE 519, D-A-CH-CZ
$\cos(\phi) > 0,95$ at rated current
Hardly any intermediate circuit voltage dip by comparison with a 4 % uK line reactor
Harmonic filter with minimum capacitive idle reactive power
Very good corrosion protection and low noise thanks to vacuum impregnation
Operation at 50 - 60 Hz possible
Use of the HF1K as a central sum filter for multiple converters possible

Applications

Harmonic filter module to ensure sinusoidal main currents, reduction of main harmonic currents, increase in system service life and system reliability and compliance with power quality standards such as IEEE 519, TEC 61000-3-2, IEC 61000-3-12.

Standards

Harmonic filter in accordance with
EN 61558 Part 1, EN 61558 Part 20, UL 508 17th Ed., CSA 22.2 No. 14-10

Approvals



UL 506, CSA 22.2



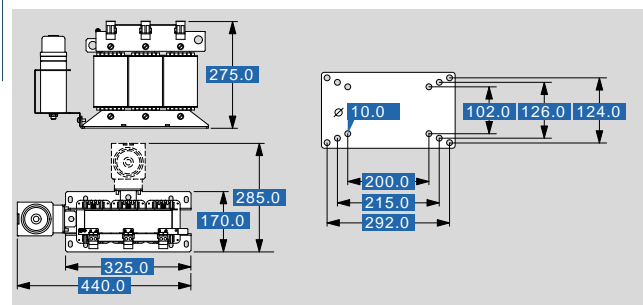
Harmonic filter HF1K 18-400

Electrical data

Type	HF1K 18-400
Operating data	
Rated voltage	3 x 400 Vac
Voltage range	360-440 Vac
Rated current	3 x 26 A
THD-I	8 % (nominal load)
Rated load power*	15 kW
Description of the load	Symmetrical loading by converters with B6U input rectifiers
Overrating Capacity	150 % for 60 sec. every 10 min.
Efficiency	99.0 %
Power loss	180.0 W
Capacitive idle power	2.9 kVAr
Input	
Rated frequency	50 - 60 Hz
Approvals	
Approvals	cURus
Environment	
Ambient temperature	-10 °C to +45 °C, without condensation
Type of cooling	AN
MTBF @ 50 °C/500 V (Mil-HB-217F)	>500.000 h @ 40°C/400Vac
Safety and protection	
Type	Open type
Insulation class	H
Protection index	IP 00
Safety class	I
Notes	
*	IE2 efficiencies of the motors and an efficiency >96 % assumed
Order numbers	
Order Number	HF1K 18-400

Mechanical data

Type	HF1K 18-400
Terminal and mounting	
Terminals phase	Screw clamp, 10 mm ²
Terminals PE	Bolt, M6
Fixing method	Mounting lugs
Measures and weights	
Weight	31.0 kg



Subject to change.