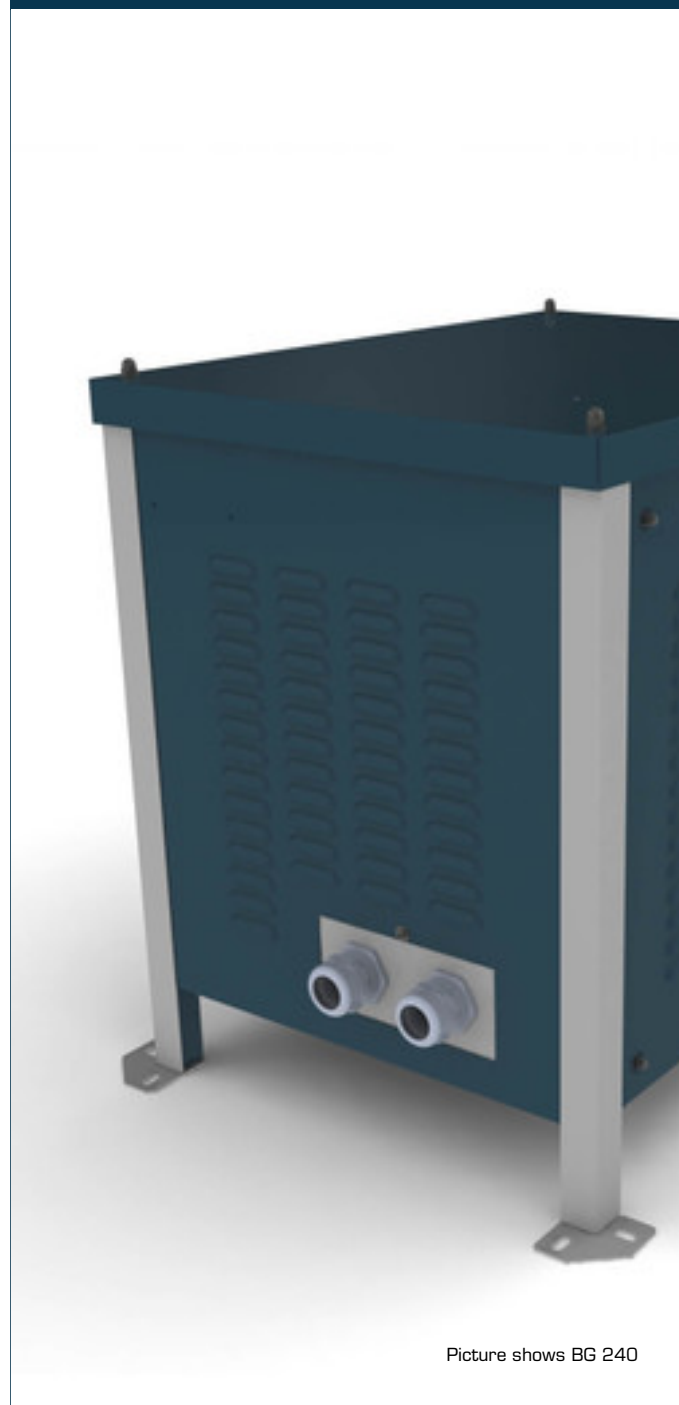


Metal enclosures

BG 300



Picture shows BG 240

Advantages

Excellent corrosion protection and high abrasion resistance through powder-coated surface RAL 5008/9006

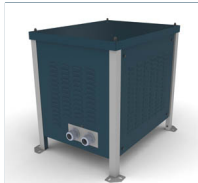
With cooling fins for optimal heat extraction

Optionally available in degree of protection IP 54

Applications

Universal metal enclosure for degree of protection IP23

Approvals



Metal enclosures BG 300

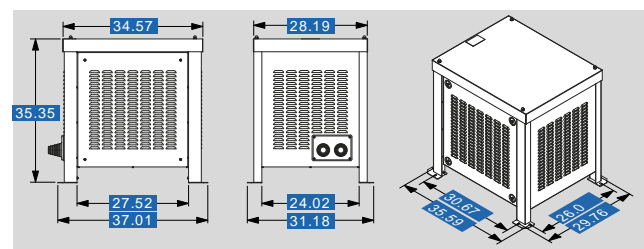
Electrical data

Type	BG 300
Operating data	
Enclosure suitable for protection index	IP 23
Max. Power loss (at 40 °C ambient temperature)	1700 W
For power (single-phase)*	53,000 VA
For power (three-phase)*	80,000 VA
Notes	
*	The indicated power is a guideline. Deviations may occur depending on the version of the transformer.
Order numbers	
Order Number	BG 300

Mechanical data

Type	BG 300
Terminal and mounting	
Cable glanding type	2 Universal entries
Cable glanding Ø	1.18 - 2.6 inch
Measures and weights	
Effective inside dimension (W)	28.94 inch
Effective inside dimension (H)	33.46 inch
Effective inside dimension (D)	25.59 inch
Fixing hole Ø	0.43 x 0.87 inch
Weight	242.51 lbs

Dimensions in inch



Subject to change.