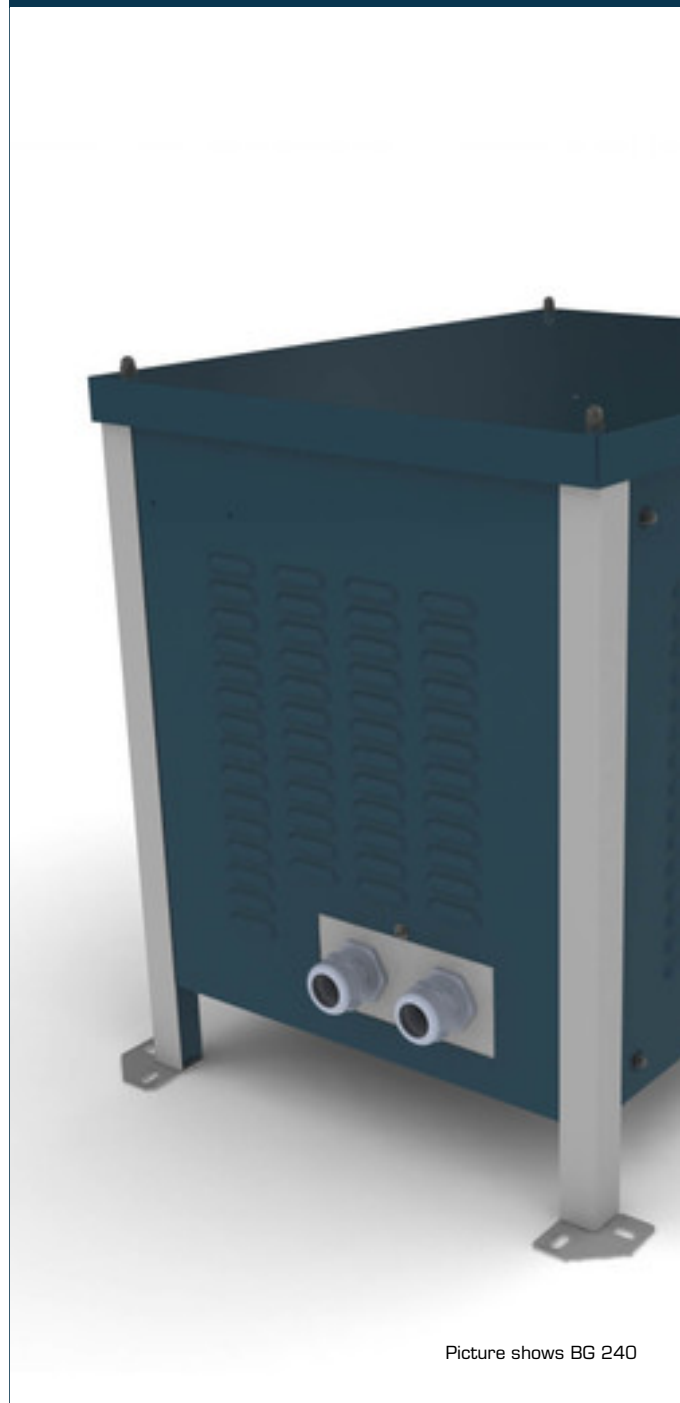


## Metal enclosures **BG 300**



Picture shows BG 240

### Advantages

Excellent corrosion protection and high abrasion resistance through powder-coated surface RAL 5008/9006

With cooling fins for optimal heat extraction

Optionally available in degree of protection IP 54

### Applications

Universal metal enclosure for degree of protection IP23

### Approvals



## Metal enclosures BG 300

Type		BG 300
Electrical data	Operating data	
	Enclosure suitable for protection index	IP 23
	Max. Power loss (at 40 °C ambient temperature)	1700 W
	For power (single-phase)*	53,000 VA
	For power (three-phase)*	80,000 VA
Notes		
*		The indicated power is a guideline. Deviations may occur depending on the version of the transformer.
Order numbers		
Order Number		BG 300

Type		BG 300
Mechanical data	Terminal and mounting	
	Cable glanding type	2 Universal entries
	Cable glanding Ø	30 - 66 mm
	Measures and weights	
	Effective inside dimension (W)	735 mm
	Effective inside dimension (H)	850 mm
	Effective inside dimension (D)	650 mm
	Fixing hole Ø	11 x 22 mm
	Weight	110 kg

