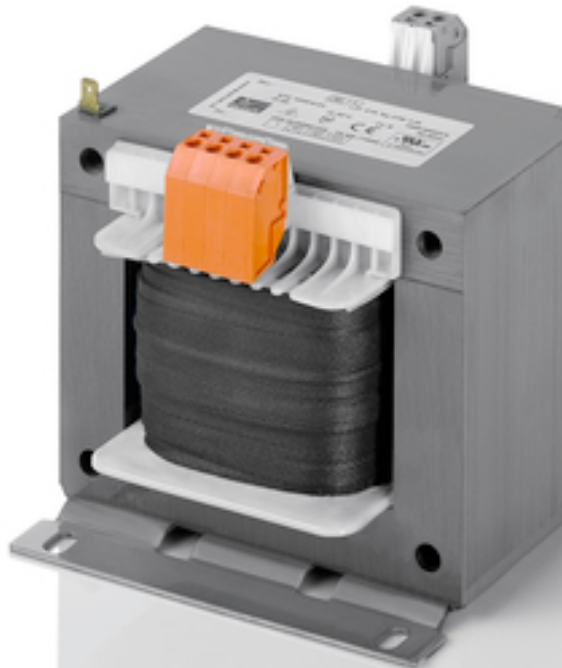


Control- and safety isolating transformer STE 63/4/24



Picture shows STE 1000/4/23

Advantages

Very good switch-on behaviour thanks to reduced starting currents
High power density due to a compact construction design
Primary side $\pm 5\%$ tapings for voltage adjustment
Very good corrosion protection and low noise thanks to BLOCK IMPEX vacuum impregnation
Quick to cable up thanks to the use of push-in terminals
Contact protected screw connection terminals complying with UVV BGV A3
Simple mounting thanks to robust metal footplate with oval slots
Up to 250 VA with combination footplate for bolted and rail mounting

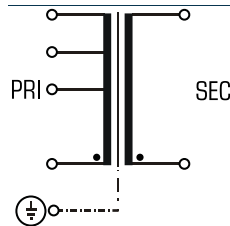
Applications

As a control transformer for the electrical isolation of the input and output sides. The construction of the transformer is designed to supply control systems according to EN 60204.

As an isolating transformer for the safe electrical isolation of the input and output sides. The transformer may be used to set up protective separation as a protective measure in accordance with VDE 0100.

As a safety isolating transformer for the safe electrical isolation of the input and output sides. The transformer is suitable for creating SELV and PELV circuits because of the limit on the output voltage.

Sample application



Standards

Control transformer

to: VDE 0570 Teil 2-2, DIN EN 61558-2-2, EN 61558-2-2, IEC 61558-2-2,
UL 5085-1/-2, CSA 22.2 No.66

Safety isolating transformer

to: VDE 0570 Part 2-6, DIN EN 61558-2-6, EN 61558-2-6, IEC 61558-2-6,
UL 5085-1/-2, CSA 22.2 No.66

Approvals



UL 5085-1/-2, CSA 22.2 No.66



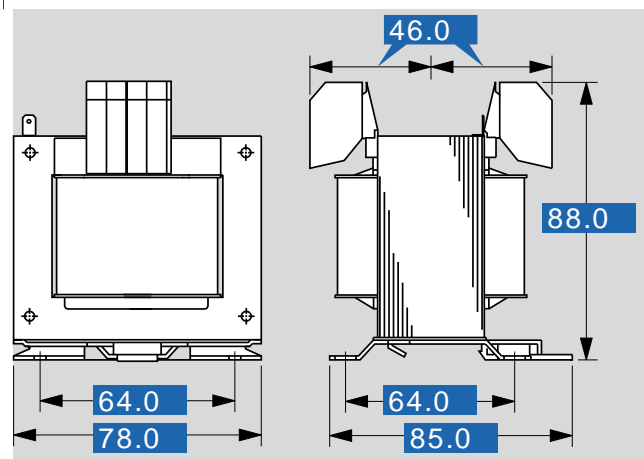
Control- and safety isolating transformer STE 63/4/24

Electrical data

Type	STE 63/4/24
Input	
Rated input voltage	400 Vac
Tappings Input	±5 %
Rated frequency	50 - 60 Hz
Output	
Rated output voltage	24 Vac
Rated power VDE (DB cos phi=1)	63 VA
Rated power VDE (KB cos phi=0.5)	175 VA
No-load voltage (app. x factor)	1.10
Efficiency	87.0 %
Approvals	
Approvals	cURus
Environment	
Ambient temperature max.	40 °C
Type of cooling	self-cooling
Safety and protection	
Type	Open type
Insulation class	VDE=B, UL=class 130
Protection index	IP 00
Safety class (prepared)	I
Short circuit strength	non-short-circuit proof
PRI Fusing recommendation by circuit breaker with tripping characteristic type 20 x I _{rated} related to set)	
Setting range	0.16 - 0.25 A
Setting value	0.20 A
Order numbers	
Order Number	STE 63/4/24

Mechanical data

Type	STE 63/4/24
Terminal and mounting	
Fixing method	Dual purpose base plate also for installation on mounting rails
Fixing screws	M4
Terminals Input	push-in terminals, 4 mm ²
Terminals Output	push-in terminals, 4 mm ²
Terminals PE	Tab connector, 6.3 x 0.8 mm
Measures and weights	
Weight	1.20 kg



Subject to change.