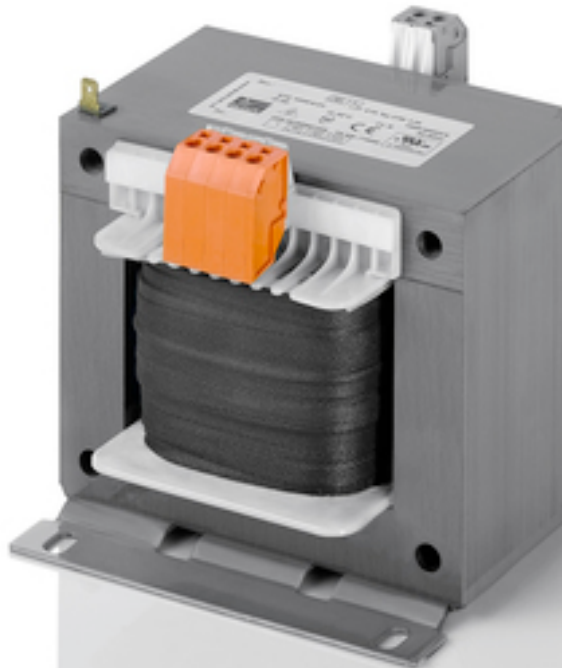


## Control- and isolating transformer STE 2000/4/23



Picture shows STE 1000/4/23

### Advantages

Very good switch-on behaviour thanks to reduced starting currents
High power density due to a compact construction design
Primary side $\pm 5\%$ tapings for voltage adjustment
Very good corrosion protection and low noise thanks to BLOCK IMPEX vacuum impregnation
Quick to cable up thanks to the use of push-in terminals
Contact protected screw connection terminals complying with UVV BGV A3
Simple mounting thanks to robust metal footplate with oval slots
Up to 250 VA with combination footplate for bolted and rail mounting

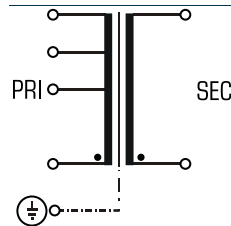
### Applications

As a control transformer for the electrical isolation of the input and output sides. The construction of the transformer is designed to supply control systems according to EN 60204.

As an isolating transformer for the safe electrical isolation of the input and output sides. The transformer may be used to set up protective separation as a protective measure in accordance with VDE 0100.

As a safety isolating transformer for the safe electrical isolation of the input and output sides. The transformer is suitable for creating SELV and PELV circuits because of the limit on the output voltage.

### Sample application



### Standards

Control transformer  
to: VDE 0570 Teil 2-2, DIN EN 61558-2-2, EN 61558-2-2, IEC 61558-2-2,  
UL 5085-1/-2, CSA 22.2 No.66  
Isolating transformer  
to: VDE 0570 Part 2-4, DIN EN 61558-2-4, EN 61558-2-4, IEC 61558-2-4,  
UL 5085-1/-2, CSA 22.2 No.66

### Approvals



UL 5085-1/-2, CSA 22.2 No.66



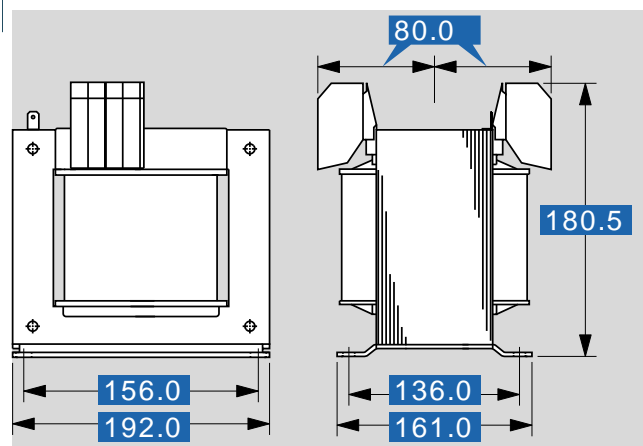
## Control- and isolating transformer STE 2000/4/23

### Electrical data

Type	STE 2000/4/23
<b>Input</b>	
Rated input voltage	400 Vac
Tappings Input	±5 %
Rated frequency	50 - 60 Hz
<b>Output</b>	
Rated output voltage	230 Vac
Rated power VDE (DB cos phi=1)	2.000 VA
Rated power VDE (KB cos phi=0.5)	10.900 VA
No-load voltage (app. x factor)	1.02
Efficiency	95.0 %
<b>Approvals</b>	
Approvals	cURus
<b>Environment</b>	
Ambient temperature max.	40 °C
Type of cooling	self-cooling
<b>Safety and protection</b>	
Type	Open type
Insulation class	VDE=B, UL=class 130
Protection index	IP 00
Safety class (prepared)	I
Short circuit strength	non-short-circuit proof
PRI Fusing recommendation by circuit breaker with tripping characteristic type 20 x I <sub>rated</sub> related to set)	
Setting range	4.00 - 6.30 A
Setting value	5.20 A
<b>Order numbers</b>	
Order Number	STE 2000/4/23

### Mechanical data

Type	STE 2000/4/23
<b>Terminal and mounting</b>	
Fixing method	Base plate
Fixing screws	M8
Terminals Input	push-in terminals, 4 mm <sup>2</sup>
Terminals Output	push-in terminals, 4 mm <sup>2</sup>
Terminals PE	Tab connector, 6.3 x 0.8 mm
<b>Measures and weights</b>	
Weight	21.80 kg



Subject to change.