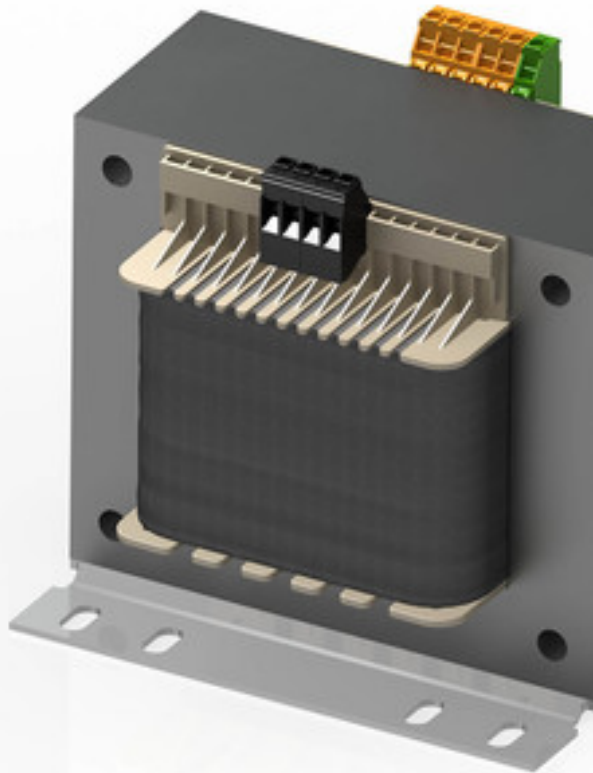


## Control- and safety isolating- resp. isolating transformer with shielding winding STSU 40/23



Picture shows STSU 1600/23

### Advantages

Dual input voltage 230 and 400 Vac
Shielding winding between input and output
Very good switch-on behaviour thanks to reduced starting currents
High power density due to a compact construction design
Primary side $\pm 15$ V tapings for voltage adjustment
Very good corrosion protection and low noise thanks to BLOCK IMPEX vacuum impregnation
Contact protected screw connection terminals complying with UVV BGV A3
Simple mounting thanks to robust metal footplate with oval slots
63 - 250 VA with combination footplate for bolted and rail mounting

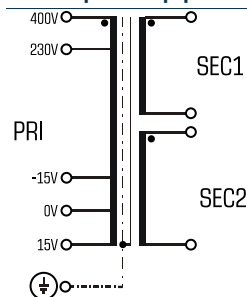
### Applications

As a control transformer for the electrical isolation of the input and output sides. The construction of the transformer is designed to supply control systems according to EN 60204.

As an isolating transformer for the safe electrical isolation of the input and output sides. The transformer may be used to set up protective separation as a protective measure in accordance with VDE 0100.

As a safety transformer for the safe electrical isolation of the input and output sides. The transformer is suitable for creating SELV and PELV circuits because of the limit on the output voltage.

### Sample application

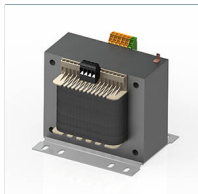


### Standards

### Approvals



UL 5085-1/-2, CSA 22.2 No.66



# Control- and safety isolating- resp. isolating transformer with shielding winding

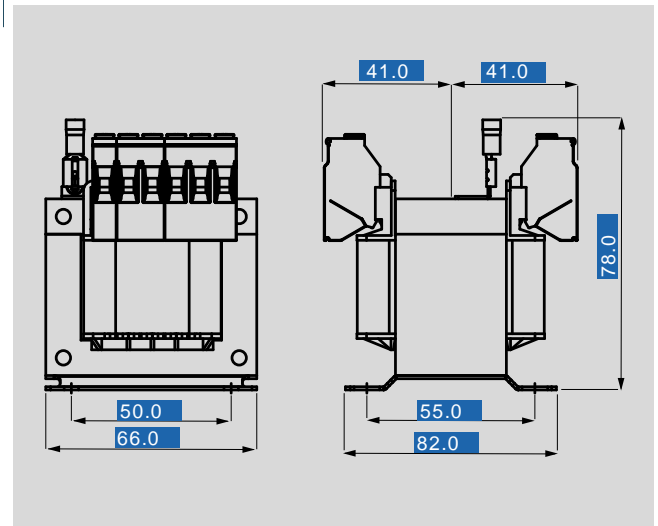
## STSU 40/23

### Electrical data

Type	STSU 40/23
Input	
Rated frequency	50 - 60 Hz
Rated input voltage	230/400 Vac
Tappings Input	±15 V
Output	
Efficiency	81.6 %
No-load voltage (app. x factor)	1.10
Rated output voltage	2 x 115 Vac
Rated power VDE (DB cos phi=1)	40 VA
Rated power VDE (KB cos phi=0.5)	
Standards	
Classification	
Approvals	
Approvals	cURus
Environment	
Ambient temperature max.	40 °C
Type of cooling	self-cooling
Safety and protection	
Insulation class	VDE=B, UL=class 130
Protection index	IP 00
Safety class (prepared)	I
Type	Open type
Short circuit strength	non-short-circuit proof
Order numbers	
Order Number	STSU 40/23

### Mechanical data

Type	STSU 40/23
Terminal and mounting	
Fixing method	Base plate
Fixing screws	M4
Terminals Input	Screw clamp, 4 mm²
Terminals Output	Screw clamp, 4 mm²
Terminals PE	Screw-type terminal, 4 mm²
Measures and weights	
Weight	1.00 kg



Subject to change.