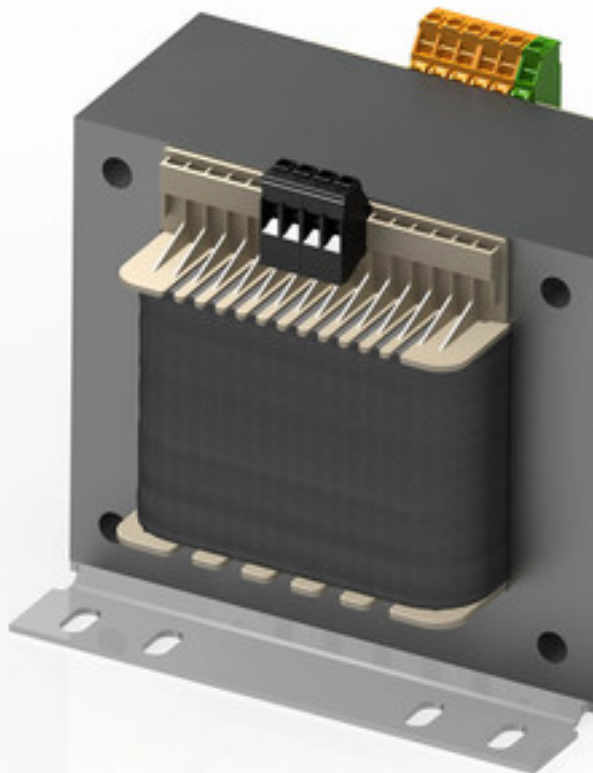


## Control- and safety isolating transformer STSU 250/24



Picture shows STSU 1600/23

### Advantages

Dual input voltage 230 and 400 Vac
Shielding winding between input and output
Very good switch-on behaviour thanks to reduced starting currents
High power density due to a compact construction design
Primary side $\pm 15$ V tapplings for voltage adjustment
Very good corrosion protection and low noise thanks to BLOCK IMPEX vacuum impregnation
Contact protected screw connection terminals complying with UVV BGV A3
Simple mounting thanks to robust metal footplate with oval slots
63 - 250 VA with combination footplate for bolted and rail mounting

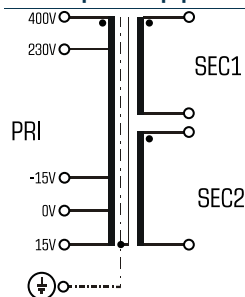
### Applications

As a control transformer for the electrical isolation of the input and output sides. The construction of the transformer is designed to supply control systems according to EN 60204.

As an isolating transformer for the safe electrical isolation of the input and output sides. The transformer may be used to set up protective separation as a protective measure in accordance with VDE 0100.

As a safety transformer for the safe electrical isolation of the input and output sides. The transformer is suitable for creating SELV and PELV circuits because of the limit on the output voltage.

### Sample application



### Standards

Control transformer

to: VDE 0570 Teil 2-2, DIN EN 61558-2-2, EN 61558-2-2, IEC 61558-2-2,  
UL 5085-1/-2, CSA 22.2 No.66

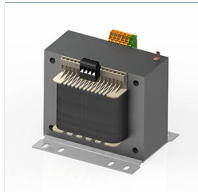
Safety isolating transformer

to: VDE 0570 Part 2-6, DIN EN 61558-2-6, EN 61558-2-6, IEC 61558-2-6,  
UL 5085-1/-2, CSA 22.2 No.66

### Approvals



UL 5085-1/-2, CSA 22.2 No.66



## Control- and safety isolating transformer STSU 250/24

Electrical data		Type	STSU 250/24
Electrical data	Input		
	Rated frequency		50 - 60 Hz
	Rated input voltage		230/400 Vac
	Tappings Input		±15 V
	Output		
	Efficiency		88.4 %
	No-load voltage (app. x factor)		1.07
	Rated output voltage		2 x 12 Vac
	Rated power VDE (DB cos phi=1)		250 VA
	Rated power VDE (KB cos phi=0.5)		850 VA
	Standards		
	Classification		Control- and safety isolating transformer
	Approvals		
	Approvals		cURus
	Environment		
	Ambient temperature max.		40 °C
	Type of cooling		self-cooling
	Safety and protection		
	Insulation class		VDE=B, UL=class 130
	Protection index		IP 00
	Safety class (prepared)		I
	Type		Open type
	Short circuit strength		non-short-circuit proof
	Order numbers		
	Order Number		STSU 250/24

Mechanical data		Type	STSU 250/24
Mechanical data	Terminal and mounting		
	Fixing method		Dual purpose foot plate also for installation on mounting rails
	Fixing screws		M5
	Terminals Input		Screw clamp, 4 mm²
	Terminals Output		Screw clamp, 4 mm²
	Terminals PE		Screw-type terminal, 4 mm²
	Measures and weights		
	Weight		3.60 kg

