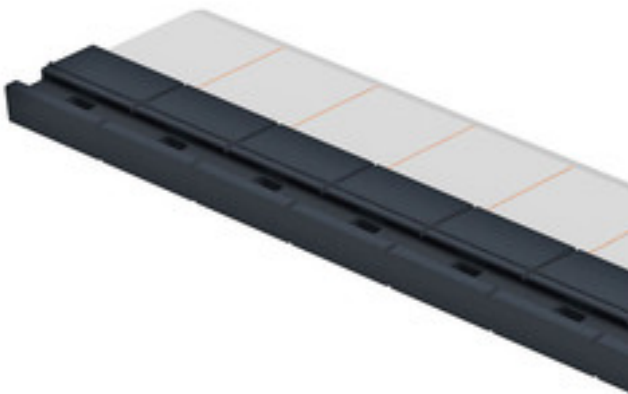


Power bus bar **EB-BAR**

Advantages

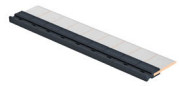
Current capacity up to 80 A

For bypassing up to 41 modules of the EasyB series



Picture shows EB-BAR

Approvals



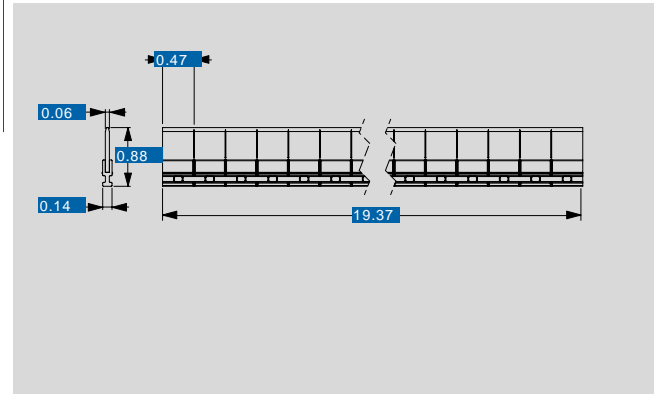
Power bus bar **EB-BAR**

Electrical data

Type	EB-BAR
General data	
Application	Power bus bar for distribution of 24 VDC voltage to all contacted EasyB modules. Max. length 492 mm for up to 41 contacted modules.
Order numbers	
Order Number	EB-BAR

Mechanical data

Type	EB-BAR
Notes	
Notes	Please enter in your order the number of modules to be contacted. (2-41 pieces)
Dimensions in inch	



Subject to change.