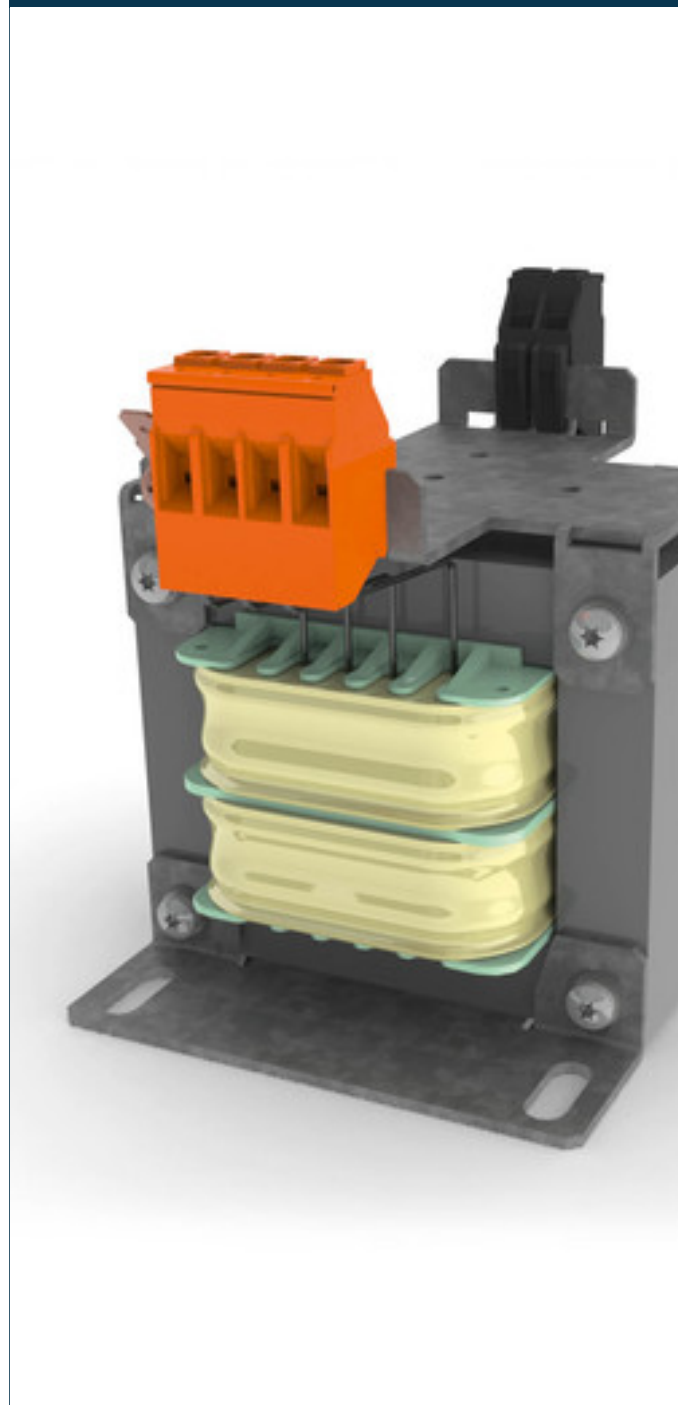


Separating transformer CT-030-048-24-0



Advantages

Fused versions available

Versions with DIN rail for additional components available

100 % finger-safe

Jumpers included for primary voltage selection

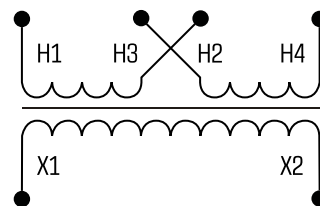
Very good corrosion protection and low noise thanks to BLOCK IMPEX vacuum impregnation

Up to 2,500 VA

Applications

As a control power transformer for adjustment of the voltage and simple electrical isolation.

Sample application



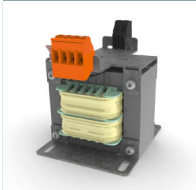
Standards

Separating transformer
to: EN 61558 part 1 with part 2-1, UL 5085-1/-2;2:2, CSA 22.2 No. 66

Approvals



UL 5085-1/-2, CSA 22.2 No.66



Separating transformer CT-030-048-24-0

Type		CT-030-048-24-0
Electrical data	Input	
	Rated input voltage	240 x 480 Vac
	Rated input current	2 x 0.70 Aac
	Output	
	Rated output voltage	24 Vac
	Power	300 VA
	Approvals	
	Approvals	cURus
	Environment	
	Ambient temperature	max. 104 °F
	Type of cooling	Air natural
	Safety and protection	
	Type	Open type
	Insulation class	B, class 130
	Protection index	IP 00
	Safety class (prepared)	I
	Short circuit strength	non-short-circuit proof
Order numbers		
Order Number	CT-030-048-24-0	

Type		CT-030-048-24-0
Mechanical data	Terminal and mounting	
	Fixing method	Base plate
	Terminals Input	Screw clamp, 4 mm ²
	Fixing screws	M4
	Terminals Output	Screw clamp, 4 mm ²
Connection type	Tab connector, 6.3 x 0.8 mm	
Measures and weights		
Weight	8.82 lbs	

Dimensions in inch

